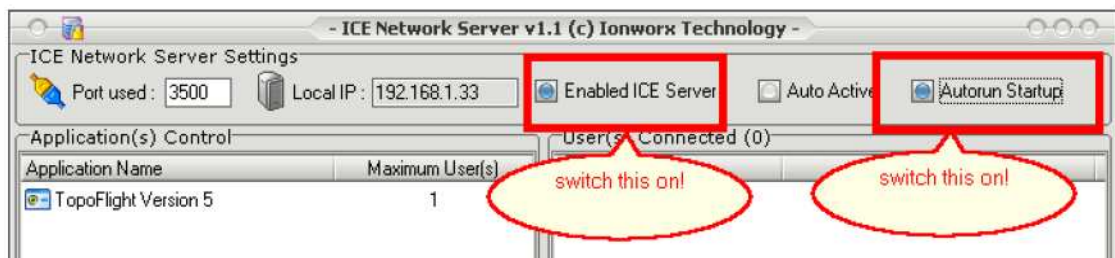


How to install TopoFlight in a network with concurrent software registration

- Decide which computer you want to use as license server. It has not necessarily to be one of your company's servers, it can be any of your machines in the network.
- Install TopoFlight on each client you want to use the program.
- You got an email with the needed files:
 - ICE Network Server.exe
 - something.ids
 - IceNetwork.ids
 - TF6License.ldf
- Create a folder on your server to copy these files to (like c:\program files\TopoFlightLicenseServer\)
- Copy the above listed files into the folder.
- Start ICE Network Server.exe. The following window appears:



- After running the ICE Network Server.exe program a file is being generated:
 - NetworkServer.cfg
- Copy both files, the new generated file and the license file
 - NetworkServer.cfg
 - TF6License.ldfto each of the clients into the folder where you TopoFlight.exe is stored.